



CERTIFICATE OF ANALYSIS

Dexso GmbH
Mr. Jonas Straumann
Rührbergweg 3
CH-4133 Pratteln

Order No. : 1503-00587
Receipt : 17. March 2015
Method : HS-GC-MS/HS-GC-FID*
Contact : Pharma: Nils Zimmermann
Food: Veronika Kulzer
Phytopharma: Frank Rosenbusch

1 Investigation task

The following sample should be analysed for purity and possible contaminations. To solve this task Headspace GC-MS (for identification) and Headspace GC-FID (for quantification) will be used.

2 Probe

Sample-Nr.	Sample
426071	Aerosoldosen Dexso

3 Method

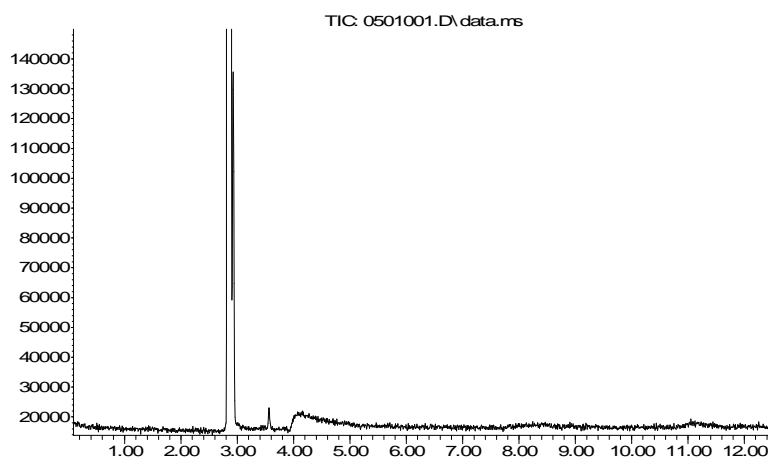
The gas of the sample was sprayed in a Headspace Vial, which was immediately closed after complete evaporation of the liquid gas. A portion of the sample was afterwards analysed by GC-MS and GC-FID.

4 Results

GC-MS Analysis

Chromatogram of empty Vial:

Abundance



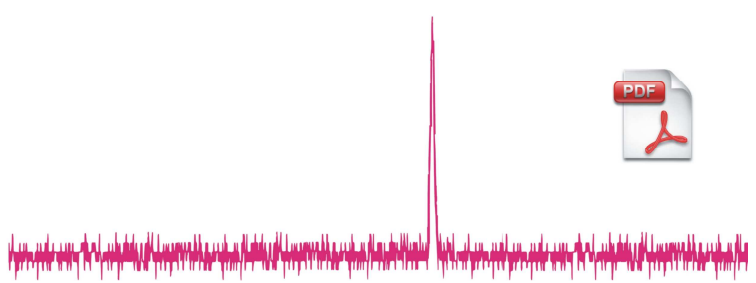
Time-->

Legend: <: less than >: more than n.d.: not detectable, less than limit of detection DM: dry matter cfu: colony forming unit Page 1 of 2
LOD: limit of detection LOQ: limit of quantification a value after "<" is the LOD of the corresponding method

Tests were generally performed according to ISO 17025. Tests marked with an asterisk (*) are not covered by the scope of the ISO 17025 accreditation. The scope of the accreditation is described in the official directory of accredited laboratories (www.sas.ch). The results in this certificate relate only to the items tested. For conformity to the Swiss GMP Guideline, a quality agreement for contract laboratory work is necessary for each product. The method is continuously monitored by the Interlabor Quality Management Program. Further parameters and the uncertainty of the method are available upon request. This certificate may be forwarded only complete and unaltered. BE1503-00587-09565931

INTERLABOR Belp AG

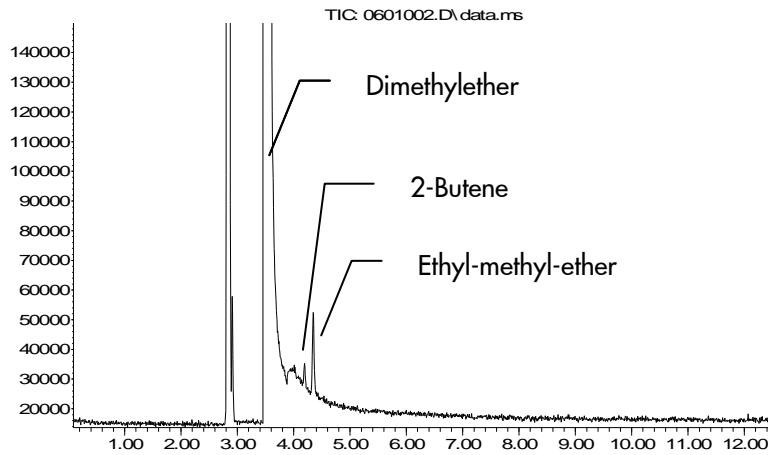
Aemmenmattstr. 16 • Postfach 205 • CH-3123 Belp
Telefon +41 (0)31 818 77 77 • Fax +41 (0)31 818 77 78
info@interlabor.ch • Internet: www.interlabor.ch



CERTIFICATE OF ANALYSIS-Dexso GmbH

Chromatogram Sample 426071:

Abundance



Time-->

GC-FID Analysis

The sample was analysed in addition with the exact same method by GC-FID to determine the percentage of the contaminating components.

Substance	Proportion
Dimethylether	99.995 %
2-Butene	0.001 %
Ethyl-methyl-ether	0.004 %

Belp, 01. April 2015

Dr. Monika Kirsch

Legend: <: less than >: more than n.d.: not detectable, less than limit of detection DM: dry matter cfu: colony forming unit Page 2 of 2
LOD: limit of detection LOQ: limit of quantification a value after "<" is the LOD of the corresponding method

Tests were generally performed according to ISO 17025. Tests marked with an asterisk (*) are not covered by the scope of the ISO 17025 accreditation. The scope of the accreditation is described in the official directory of accredited laboratories (www.sas.ch). The results in this certificate relate only to the items tested. For conformity to the Swiss GMP Guideline, a quality agreement for contract laboratory work is necessary for each product. The method is continuously monitored by the Interlabor Quality Management Program. Further parameters and the uncertainty of the method are available upon request. This certificate may be forwarded only complete and unaltered. BE1503-00587-09565931